



CONTACT A TRAVEL EXPERT

800-323-7373
www.piratealumni.com



LAND PROGRAM
October 17-24, 2011

| Full Price | Special Savings | Special Price |
|------------|-----------------|---------------|
| \$3,245 | \$250 | \$2,995* |

***Special Price valid if booked by 6/7/2011.**

VAT is an additional \$145 per person.

All prices quoted are in USD, per person, based on double occupancy (unless otherwise stated). Single accommodations are an additional \$595 (limited availability).



AIR PROGRAM
October 16-24, 2011

Take advantage of AHI Travel's exclusive Group Air Program, which provides the benefit of specially negotiated rates on major commercial airlines worldwide. Participants enjoy advanced seat assignments on most airlines; guaranteed arrival and departure transfers with baggage handling; a price guarantee that covers airfare, fuel surcharges and all taxes; and many other benefits.

AHI can also make flight arrangements for passengers who wish to fly independent of the Group Air Program.

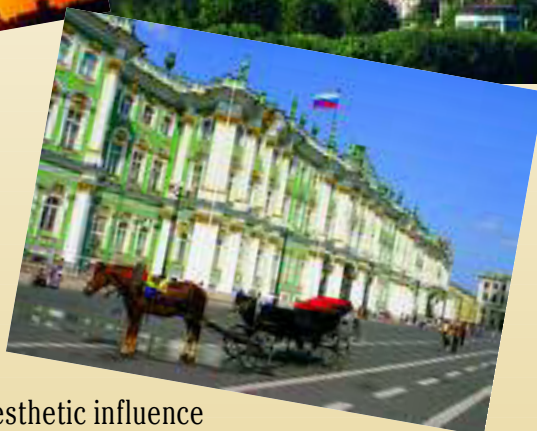
All passengers who book their flights through AHI automatically receive flight insurance worth up to \$250,000, subject to policy terms. Please indicate how you would like us to handle your air on the Reservation Form or call us to discuss your flight options. Special business-class upgrades are available on select international flights.

AHI Travel's exclusive Air Program provides special advantages for travelers who are flying on our designated group flights.

THE CULTURAL SEASON

ST. PETERSBURG

An Exclusive Educational and Travel Experience



Like a jewel box fashioned by Fabergé, St. Petersburg is a masterpiece of design and ingenuity, a magical tapestry of vibrant colors framed by sparkling water. The days of the czars may be long over, but a vivid record of their glory and aesthetic influence lives on in this fabled city. It was the vision of Peter the Great to build a Russian capital that would rival the great cities of Europe. Through three centuries of strife, St. Petersburg has reigned like a charming, flamboyant monarch—defiantly opulent, extravagantly colorful and altogether irresistible.



PROGRAM HIGHLIGHTS

- Delight in the friendly service and elegant amenities of the luxurious **Angleterre Hotel**.
- Discover **St. Petersburg** with a tour of its highlights and visits to some of its key landmarks.
- Visit **Catherine Palace** and admire the **Amber Room**, meticulously restored to look as it did prior to World War II.
- Delight in the opulent **Palace of Pavlovsk**.
- Marvel at the many treasures of the **State Hermitage Museum**. A guaranteed early entrance ensures you will be able to leisurely see its many works of art.
- Enjoy a performance at the **State Hermitage Theater**, a magnificent setting for a taste of Russian art and culture.
- Tour the **Mariinsky Theater**, one of the most historic and famous theaters in the world.

INCLUDED FEATURES

Accommodations

- **Seven nights** in **St. Petersburg, Russia**, at the deluxe **Angleterre Hotel**.

Activities and Events

- **Informative educational programs**, presented by **local experts**, will enhance your insight into the region.
- **All excursions** as outlined in your program itinerary.
- Attend a **Welcome Reception and Dinner**.
- Gather for a **Farewell Reception and Graduation Ceremony** followed by a **Farewell Dinner**.

Extensive Meal Program

- Enjoy seven breakfasts, three lunches and four dinners; tea or coffee with all meals, plus wine with dinner.
- Sample **authentic regional specialties** during select meals at featured **local restaurants** with our **Dine-Around Dinner** program.
- Take advantage of **leisure time** to try the **local cuisine** independently.

MANY INCLUDED EXTRAS

- Consultation services of a dedicated **Passenger Service Representative** prior to departure.
- Services of a friendly, professional **Campus Director** and expert **English-speaking local guides** throughout your stay.
- Detailed travel and destination information to assist in planning.
- **Tipping** of excursion guides and drivers.
- Complimentary travel wallet.



DAY-BY-DAY ITINERARY

DAY 1 ~ IN TRANSIT

Depart your gateway city for **St. Petersburg** aboard scheduled jet service.*

DAY 2 ~ ST. PETERSBURG

Upon arrival, transfer* to the *Angleterre Hotel*. Tonight, attend a *Welcome Reception and Dinner*.

DAY 3 ~ ST. PETERSBURG

Educational Focus: *The Poetic Soul of St. Petersburg: The Literature and Poetry of Russia.*
Excursion: *Highlights of St. Petersburg.* See *The Bronze Horseman*, the famous statue of Peter the Great on a rearing horse; the neoclassical Admiralty; and the historic buildings, palaces and churches that help make the city one of Europe's most dazzling capitals. Visit St. Isaac's Cathedral and the Peter and Paul Fortress.
Educational Focus: *Czarist Russia.*

DAY 4 ~ CATHERINE PALACE/ PALACE OF PAVLOVSK

Excursion: *Catherine's Palace, including the Amber Room.*
Visit Catherine's Palace, a Russian baroque masterpiece that is home to the famed Amber Room. A splendid chamber of intricate amber panels and mosaics made of jasper and agate, its priceless decorations were stolen by the Nazis in World War II. It has been restored as the result of a German-Russian joint effort.

Excursion: *Pavel and the Palace of Pavlovsk.* Discover the stunning neoclassical palace built for Catherine the Great's son, Czar Paul I, considered to be one of the greatest achievements in Russian architecture.

DAY 5 ~ STATE HERMITAGE MUSEUM

Excursion: *State Hermitage Museum.* Visit the Hermitage, part of the opulent Winter Palace constructed by Catherine the Great, and home to one of the world's foremost collections of fine art. The dazzling array of works includes

Russian prehistoric artifacts, relics from ancient Greece and Rome, examples of Russian jewelry, and art by French Impressionists and Dutch and Italian Masters.

DAY 6 ~ THE RUSSIAN MUSEUM/THE CHURCH OF THE SPILLED BLOOD/ HERMITAGE THEATER

Educational Focus: *Russian Art.*

Excursion: *The Russian Museum and the Church of the Spilled Blood.* Visit the Russian Museum, which houses the largest collection of Russian art in the world. Continue to the Church of the Spilled Blood. Built on the spot where Czar Alexander II was assassinated in 1881, it is one of the most beautiful churches in St. Petersburg.
Excursion: *Performance at the Hermitage Theater.* This evening, attend a cultural performance at the magnificent Hermitage Theater. A part of the Hermitage complex of palaces, the theater is justly renowned for its magnificent architecture and sumptuous interiors.

DAY 7 ~ MARIINSKY THEATER

Educational Focus: *Russian Music and Ballet.*
Excursion: *Behind the Scenes Visit to the Mariinsky Theater.* Tour one of the world's most famous and historic performance palaces. Named after Alexander II's wife Maria, the Mariinsky's stage has been graced by the likes of Pavlova, Nijinsky, Nureyev and Baryshnikov.

DAY 8 ~ ST. PETERSBURG

Independent Exploration: The day is at leisure. Tonight, attend a *Farewell Reception, Graduation Ceremony and Farewell Dinner*.

DAY 9 ~ IN TRANSIT

After breakfast, transfer to the airport for the return flights to your gateway city.*

NOTE: Itinerary sequence and/or scheduled events may change. Many excursions in this program involve an element of walking.

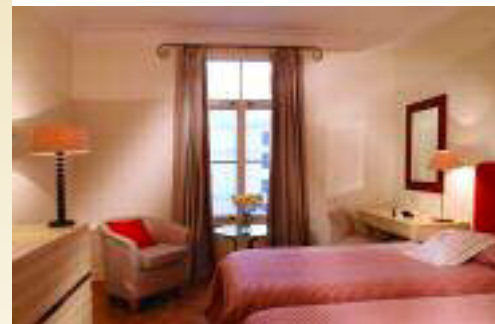
* Provided for Air Program participants.

ACCOMMODATIONS



ANGLETERRE HOTEL

Located in the heart of St Petersburg, the elegant *Angleterre Hotel* overlooks St Isaac's Square and is close to the city's many historic landmarks, lively markets and fashionable shops. Recently renovated, it offers a vast range of services. Take advantage of the fully equipped fitness center, indulge in a treatment at the beauty salon, swim a few laps at the indoor swimming pool or relax in the gallery overlooking iconic St. Isaac's Cathedral. Savor contemporary European cuisine in the hotel's restaurant and listen to the performance of a jazz pianist in the bar. At the end of the day, return to the comforts of your stylishly appointed guest room. Each one includes individual climate controls, a direct-dial telephone, interactive television system, minibar, electronic safe, fax and modem points, and broadband Internet connection.



Previous page (top to bottom):
The Bronze Horseman
Church on Spilled Blood
Winter Palace Square
Cameron Gallery at Catherine Palace



AHI Travel
6400 Shafer Court
Rosemont, IL 60018

Reserve your trip to St. Petersburg today!

For Office Use Only: B #: _____ Date: _____
 Flyer:6-19643W PSR: _____

Send to: The Culture & Arts of St. Petersburg
 East Carolina University Alumni Association
 c/o AHI Travel
 6400 Shafer Court
 Rosemont, IL 60018

Please contact AHI Travel at **800-323-7373** with questions regarding this trip or to make a reservation.

Full Legal Name (exactly as it appears on passport)

(1) _____
 Title First Middle Last Class Year

(2) _____
 Title First Middle Last Class Year

Street Address _____

City _____

State _____ ZIP _____

Home: (_____) _____

Office: (_____) _____

E-mail: _____

Yes, please e-mail me information about special travel opportunities.

Sharing with _____ (Form sent separately.)

Name(s) you would like on your name badge(s):

(1) _____

(2) _____

**I/we authorize you to make my/our reservations as follows:
 Land Program**

- I/we will make my/our own air arrangements and transfers.
- Please call me/us to discuss my/our air options.
- I prefer single accommodations at an additional \$595 (limited availability).
- I request assistance in securing a roommate but will accept a single, if one is available at this time, and pay the single supplement. Should a roommate be found, I understand the supplement will no longer apply.

Land and Air Program

I/we reserve the Land Program and request the Air Program to/from St. Petersburg, Russia, to depart from:

_____ Departure City

Please send me information on upgrading my flights.

Please note: Air prices will be sent to you with your Reservation Confirmation and air schedule sent at 90 days before departure. International flight arrangements can be canceled with no obligation up to 75 days before departure.

Reservations are subject to availability and processed on a first come, first served basis. Reservations to be paid in full by August 2, 2011 (75 days prior to departure). Reservations received after this date must be accompanied by payment in full. Final payment may be made by personal check, MasterCard or Visa. Make checks payable to AHI International.

Enclosed is a deposit of _____ (\$600 per person required) to reserve _____ place(s).

- Accept my check made payable to **AHI International**.
- Charge my deposit to: MasterCard Visa

Card # _____

Expires _____/_____/_____

(Signature as it appears on credit card)

Please note: Any payment to AHI International constitutes your acceptance of the terms and conditions set out herein, including but not limited to the Cancellation terms.

NEW ULTIMATE FLEXIBILITY-The AHI Travel Passenger Protection Plan now offers a low-cost **Any Reason Cancellation** feature. Book worry free!

NOT INCLUDED-Fees for passports and, if applicable, visas, entry/departure fees; personal gratuities; laundry and dry cleaning; excursions, wines, liquors, mineral waters and meals not mentioned in this brochure under included features; travel insurance; all items of a strictly personal nature.

MOBILITY AND FITNESS TO TRAVEL-The right is retained to decline to accept or to retain any person as a member of this trip who, in the opinion of AHI Travel is unfit for travel or whose physical or mental condition may constitute a danger to themselves or to others on the trip, subject only to the requirement that the portion of the total amount paid which corresponds to the unused services and accommodations be refunded. Passengers requiring special assistance, including without limitation those who permanently or periodically use a wheelchair, must be accompanied by someone who is fit and able to assist them, and who will be totally responsible for providing all required assistance.

AIR TRANSPORTATION-The price of air transportation offered by AHI Travel is based on Advance Purchase Excursion fares. After tickets are issued, penalties up to 100% of the ticket price may be levied. If connecting flights are requested, special promotional fares may be used, in which case penalties of as much as 100% may be assessed by the airlines if reservations are changed or canceled after ticketing. After departure, if the reservations are changed, you will be charged the higher, all year Economy class fare. **VARIATIONS TO THE GROUP ITINERARY MUST BE REQUESTED NO LATER THAN 60 DAYS PRIOR TO DEPARTURE.** Passengers who choose to make their own airline reservations independently will be wholly responsible for any airline fees or penalties incurred as a result of program cancellation and/or change in travel dates, or airline schedule(s).

CANCELLATION-In addition to airline cancellation penalties, all cancellations for any reason whatsoever will be subject to a \$250 per person cancellation fee. Cancellation from 120 days to 76 days prior to departure will result in forfeiture of 10% of the entire cost of the trip per person; 75 days to 30 days, 50% of the trip cost per person; cancellation from 29 days up to the time of departure will result in 100% forfeiture of the entire cost of the trip. **TRIP CANCELLATION INSURANCE IS AVAILABLE. AN APPLICATION WILL BE SENT AFTER YOU RESERVE.** All cancellations must be submitted in writing to AHI International Corporation.

BAGGAGE-Baggage restrictions vary according to the airline policy and the class of service flown. Details will be provided with your pre-departure information. Baggage allowances are subject to change by the carrier without notice. Excess baggage charges for additional or oversized/overweight pieces are expensive and not included in your trip price; plan your wardrobe accordingly. Transport of baggage and personal effects is at the owner's risk throughout the travel program.

AUTHORITY TO USE IMAGES AND AUDIO RECORDINGS - On occasion, AHI Travel obtains, from its staff, or from trip participants, photographic or video images of passengers and trip activities. By participating in this travel program, you authorize AHI Travel, without providing compensation to you, or obtaining additional approvals from you, to include photographic and video recordings of you, as well as voice recordings included with any videos, in AHI Travel's sales, marketing, advertising, publicity and/or training activities.

RESPONSIBILITY - AHI Travel and the Sponsoring Association act only as agents for the suppliers of travel conveyance, transport, accommodations or other service and have no responsibility for any delays, delayed departure or arrival, missed carrier connections, loss, death, damage or injury to person or property or accident, mechanical defect, failure or negligence of any nature howsoever caused in connection with any accommodations, transportation or other services or for any substitution of hotels or of common carrier equipment, with or without notice, or for any additional expenses occasioned thereby. Dates, Program Details and Tour costs, although given in good faith and based on tariffs, exchange rates and other information current at the time of printing, are subject to change at or before the time of departure. No revisions of the printed itinerary or its included features are anticipated; however, the right is reserved to make any changes, with or without notice, that might become necessary, with the mutual understanding that any additional expenses will be paid by the individual passenger. Baggage and personal effects are the sole responsibility of the owners at all times. If the entire program is canceled for any reason, participants shall have no claim other than for a full refund. By forwarding the deposit, the passenger certifies that he/she has no physical, mental or other condition of disability that would create a hazard for himself/herself or other passengers and accepts the terms of this contract. The airlines and other transportation companies concerned are not to be held responsible for any act, omission, or event, during the time passengers are not on board their conveyances. The passage contract in use, when issued, shall constitute the sole contract between the company(ies) and the passenger and/or purchaser of this trip.

Calif. Seller of Travel Reg. No. 2028271-40, Fla. ST Reg. No. ST-36196, Iowa ST Reg. No. 520, Nevada ST Reg. No. 2003-0257, Ohio ST Reg. No. 8889139, Wash. State ST Reg. No. 601-820-781. PARTICIPATING AIRLINES-all IATA and ARC member carriers. ©2010 AHI Travel Printed in the USA.